

# MAGIC II TP-602MV

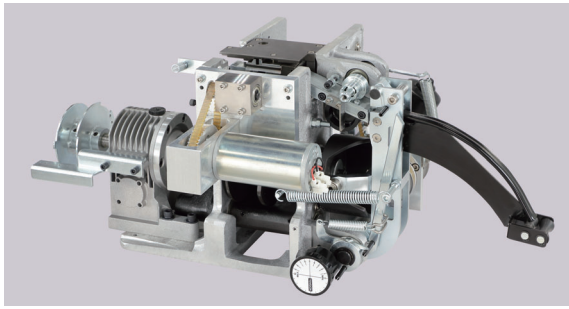
## Semi-Auto Pallet Strapping Machine with Retractable Sword

MAGIC II TP-602MV is a portable semi-auto pallet strapping machine for vertical strapping applications. It can work with both PP and PET strapping (9 mm, 12 mm, or 15.5 mm) and offers tension force up to 150 kg. It eliminates the use of manual tools and dispensers, and can be moved easily beside the load you want to strap without moving the pallet. The retractable sword goes through pallet void and automatically retracts during the strapping cycle. It reduces floor space and protects the sword from damage. TP-602MV is ideal for low to moderate use of pallet strapping.

**NEW**



## Main Features



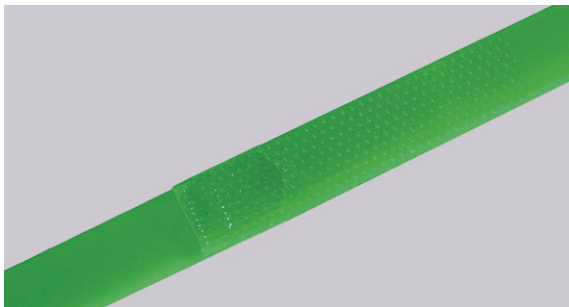
### Robust and Lubrication Free Strapping Head

Applying robust mechanism design and high engineering standard with the latest German-made DC motor technology, it provides the highest level of reliability and durability. Requiring no lubrication for strapping head, it greatly simplifies the maintenance routine and minimizes the maintenance cost.



### Retractable Sword

Motorized retractable sword goes through pallet void with feeding strap and automatically retracts during the strapping cycle. It reduces floor space and protects the sword from damage.



### Friction Weld Sealing Technology

The advanced **friction weld sealing** technology guarantees reliable joint and high sealing efficiency for both PP and PET strapping. Tension force is up to 1500 N (150 kg). No fumes and odours. Ready to use once turned on.

### Adjustable Weld-Cooling Time

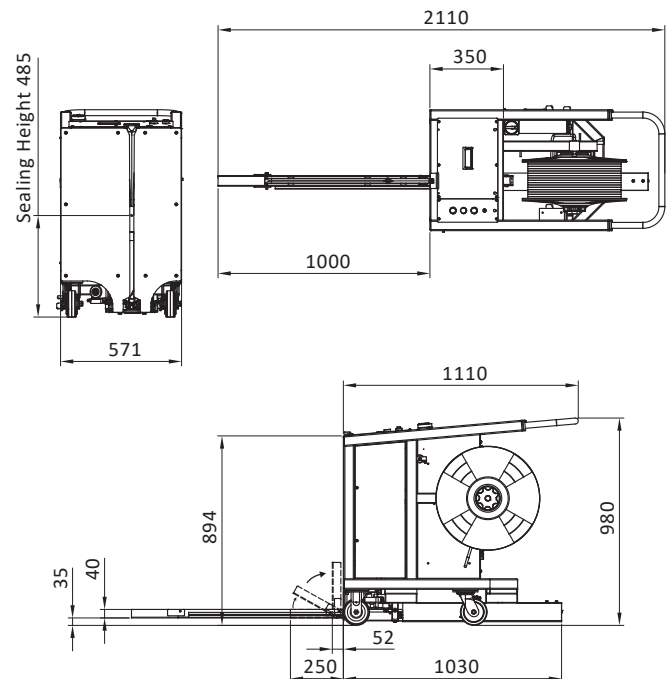
The weld cooling time can be increased to ensure high joint efficiency under high tension.

### Error Message Indicator

Provides easy troubleshooting. User friendly.

## Other Features

- Sealing height is only 485 mm from the floor so even lower pallets can be strapped.
- Large casters provide good mobility. It is easy to move the machine beside the pallet you want to strap.
- The user-friendly operating control panel is located on upper side of the machine for easy access.
- With the auxiliary feeding switch, it's easier to feed more strap to meet various package size requirements. User friendly.
- Two operation modes (auto and semi-auto) to meet various strapping requirements.



## Technical Data

<b>Strap Type</b>	PP and PET strapping
<b>Strap Width</b>	9 mm, 12 mm, or 15.5 mm
<b>Tension Range</b>	7 kg - 150 kg
<b>Sealing Height</b>	485 mm
<b>Strap Core Size</b>	200 mm (Option : 406 mm/230 mm/280 mm)
<b>Electrical Requirements</b>	110V 60Hz 1PH 220V, 230V, 240V 50/60Hz 1PH